





5.17 NORTH ELEVATED PLAZA RENDERING



D.C. UNITED STADIUM EXTERIOR MATERIAL INDEX

1. CAST-IN-PLACE CONCRETE - RANDOM WOOD PLANK FORM-LINER - COLOR GRAY
2. EQUITONE* [tective] FIBRE CEMENT FACADE PANEL - COLOR TE80
3. EQUITONE* [tective] FIBRE CEMENT FACADE PANEL - COLOR TE00
4. EQUITONE* [tective] FIBRE CEMENT FACADE PANEL - COLOR TE10
5. EQUITONE [tective] FIBRE CEMENT FACADE PANEL - COLOR TE60
6. PRODEMA* NATURAL WOOD FINISHED PANEL - COLOR RUSTIK
7. VMZ* ZINC METAL PANEL - INTERLOCKING PATTERN - COLOR QUARTZ
8. ANODIZED ALUMINUM CURTAIN WALL MULLIONS
9. SUNGUARD* INSULATED GLASS UNIT - SUPERNEUTRAL 54
10. INSULATED GLASS UNIT - SPANDREL - COLOR WHITE
11. ANODIZED ALUMINUM METAL PANEL - CUSTOM PERFORATION PATTERN
12. ANODIZED ALUMINUM METAL PANEL - 1" DIAMETER PERFORATION PATTERN
13. MILL FINISHED ALUMINUM METAL PANEL - NO PERFORATION PATTERN
14. BENJAMIN MOORE* PAINT - COLOR RACCOON FUR - DARK GRAY
15. RED METAL PANEL @ ESCALATOR ENCLOSURE
16. RED FABRIC SCRIM @ LIGHT BANNERS
17. GLASS PV PANELS
18. DEEP TRAY GREEN ROOF SYSTEM

SAMPLE BOARDS WILL BE PROVIDED AT HEARING

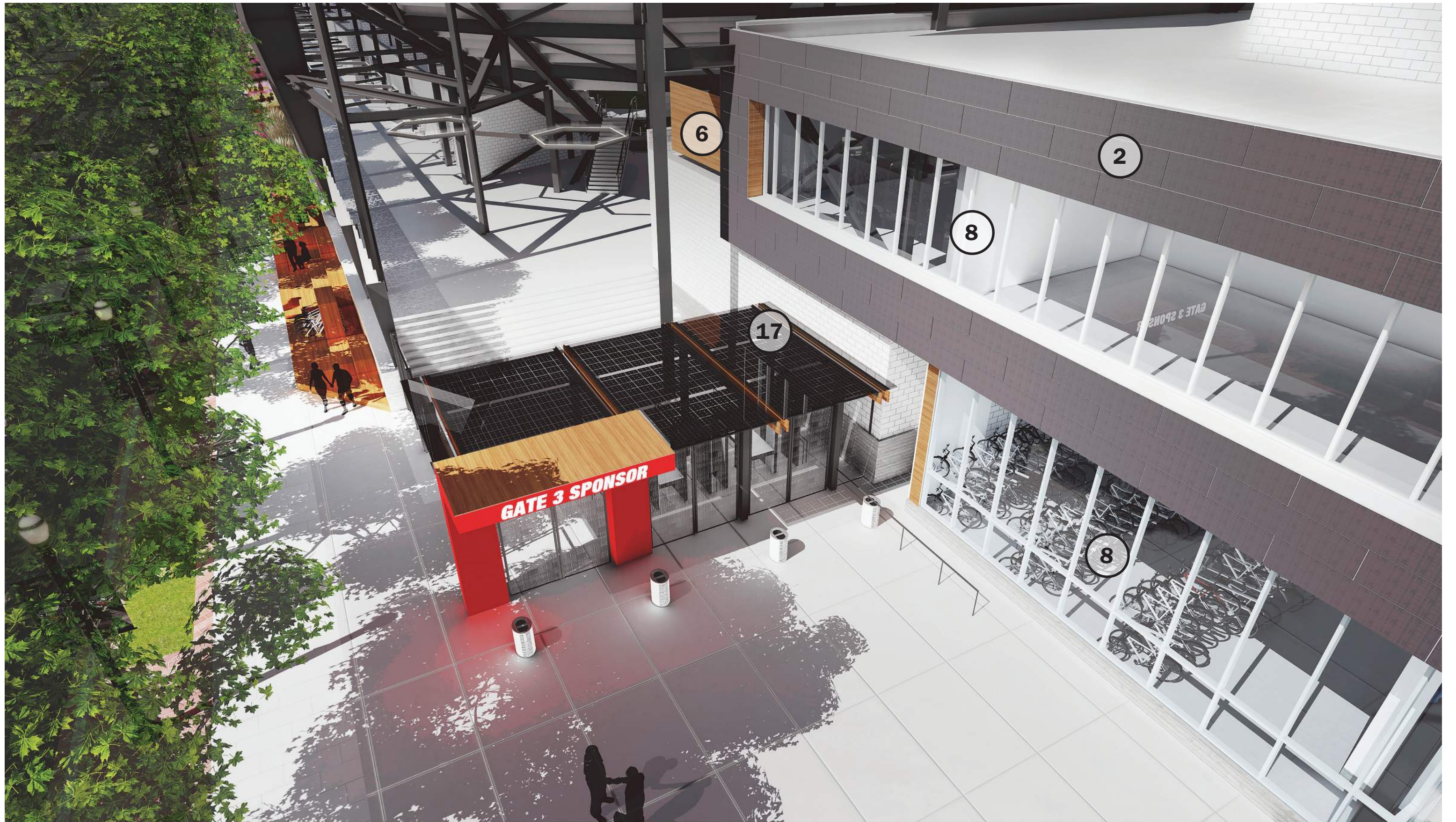
**Manufacturers and Product Identifications are provided herein only to serve as the basis of design. Alternative manufacturers of similar materials may be considered.*





5.21 2ND STREET PARKLET 1 RENDERING







D.C. UNITED STADIUM EXTERIOR MATERIAL INDEX

1. CAST-IN-PLACE CONCRETE - RANDOM WOOD PLANK FORM-LINER - COLOR GRAY
2. EQUITONE* [tective] FIBRE CEMENT FACADE PANEL - COLOR TE80
3. EQUITONE* [tective] FIBRE CEMENT FACADE PANEL - COLOR TE00
4. EQUITONE* [tective] FIBRE CEMENT FACADE PANEL - COLOR TE10
5. EQUITONE [tective] FIBRE CEMENT FACADE PANEL - COLOR TE60
6. PRODEMA* NATURAL WOOD FINISHED PANEL - COLOR RUSTIK
7. VMZ* ZINC METAL PANEL - INTERLOCKING PATTERN - COLOR QUARTZ
8. ANODIZED ALUMINUM CURTAIN WALL MULLIONS
9. SUNGUARD* INSULATED GLASS UNIT - SUPERNEUTRAL 54
10. INSULATED GLASS UNIT - SPANDREL - COLOR WHITE
11. ANODIZED ALUMINUM METAL PANEL - CUSTOM PERFORATION PATTERN
12. ANODIZED ALUMINUM METAL PANEL - 1" DIAMETER PERFORATION PATTERN
13. MILL FINISHED ALUMINUM METAL PANEL - NO PERFORATION PATTERN
14. BENJAMIN MOORE* PAINT - COLOR RACCOON FUR - DARK GRAY
15. RED METAL PANEL @ ESCALATOR ENCLOSURE
16. RED FABRIC SCRIM @ LIGHT BANNERS
17. GLASS PV PANELS
18. DEEP TRAY GREEN ROOF SYSTEM

SAMPLE BOARDS WILL BE PROVIDED AT HEARING

**Manufacturers and Product Identifications are provided herein only to serve as the basis of design. Alternative manufacturers of similar materials may be considered.*



D.C. UNITED STADIUM EXTERIOR MATERIAL INDEX

1. CAST-IN-PLACE CONCRETE - RANDOM WOOD PLANK FORM-LINER - COLOR GRAY
2. EQUITONE* [tective] FIBRE CEMENT FACADE PANEL - COLOR TE80
3. EQUITONE* [tective] FIBRE CEMENT FACADE PANEL - COLOR TE00
4. EQUITONE* [tective] FIBRE CEMENT FACADE PANEL - COLOR TE10
5. EQUITONE [tective] FIBRE CEMENT FACADE PANEL - COLOR TE60
6. PRODEMA* NATURAL WOOD FINISHED PANEL - COLOR RUSTIK
7. VMZ* ZINC METAL PANEL - INTERLOCKING PATTERN - COLOR QUARTZ
8. ANODIZED ALUMINUM CURTAIN WALL MULLIONS
9. SUNGUARD* INSULATED GLASS UNIT - SUPERNEUTRAL 54
10. INSULATED GLASS UNIT - SPANDREL - COLOR WHITE
11. ANODIZED ALUMINUM METAL PANEL - CUSTOM PERFORATION PATTERN
12. ANODIZED ALUMINUM METAL PANEL - 1" DIAMETER PERFORATION PATTERN
13. MILL FINISHED ALUMINUM METAL PANEL - NO PERFORATION PATTERN
14. BENJAMIN MOORE* PAINT - COLOR RACCOON FUR - DARK GRAY
15. RED METAL PANEL @ ESCALATOR ENCLOSURE
16. RED FABRIC SCRIM @ LIGHT BANNERS
17. GLASS PV PANELS
18. DEEP TRAY GREEN ROOF SYSTEM

SAMPLE BOARDS WILL BE PROVIDED AT HEARING

**Manufacturers and Product Identifications are provided herein only to serve as the basis of design. Alternative manufacturers of similar materials may be considered.*





5.29 1ST STREET W/ PARCEL B DEVELOPMENT
RENDERING



D.C. UNITED STADIUM EXTERIOR MATERIAL INDEX

1. CAST-IN-PLACE CONCRETE - RANDOM WOOD PLANK FORM-LINER - COLOR GRAY
2. EQUITONE* [tective] FIBRE CEMENT FACADE PANEL - COLOR TE80
3. EQUITONE* [tective] FIBRE CEMENT FACADE PANEL - COLOR TE00
4. EQUITONE* [tective] FIBRE CEMENT FACADE PANEL - COLOR TE10
5. EQUITONE [tective] FIBRE CEMENT FACADE PANEL - COLOR TE60
6. PRODEMA* NATURAL WOOD FINISHED PANEL - COLOR RUSTIK
7. VMZ* ZINC METAL PANEL - INTERLOCKING PATTERN - COLOR QUARTZ
8. ANODIZED ALUMINUM CURTAIN WALL MULLIONS
9. SUNGUARD* INSULATED GLASS UNIT - SUPERNEUTRAL 54
10. INSULATED GLASS UNIT - SPANDREL - COLOR WHITE
11. ANODIZED ALUMINUM METAL PANEL - CUSTOM PERFORATION PATTERN
12. ANODIZED ALUMINUM METAL PANEL - 1" DIAMETER PERFORATION PATTERN
13. MILL FINISHED ALUMINUM METAL PANEL - NO PERFORATION PATTERN
14. BENJAMIN MOORE* PAINT - COLOR RACCOON FUR - DARK GRAY
15. RED METAL PANEL @ ESCALATOR ENCLOSURE
16. RED FABRIC SCRIM @ LIGHT BANNERS
17. GLASS PV PANELS
18. DEEP TRAY GREEN ROOF SYSTEM

SAMPLE BOARDS WILL BE PROVIDED AT HEARING

**Manufacturers and Product Identifications are provided herein only to serve as the basis of design. Alternative manufacturers of similar materials may be considered.*